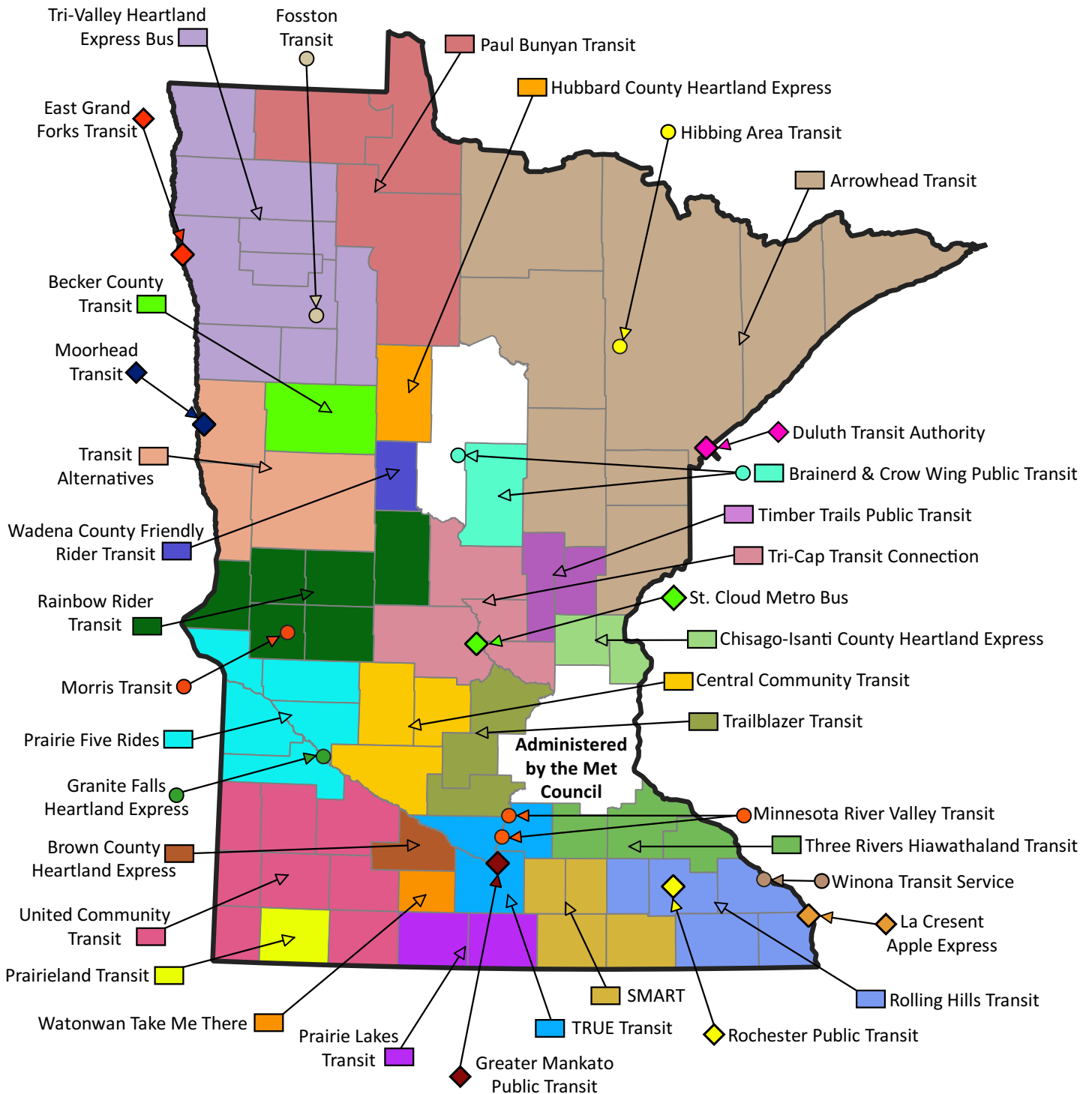


Greater Minnesota Public Transit Map

Systems Administered by the Minnesota Department of Transportation

Current as of September 2018



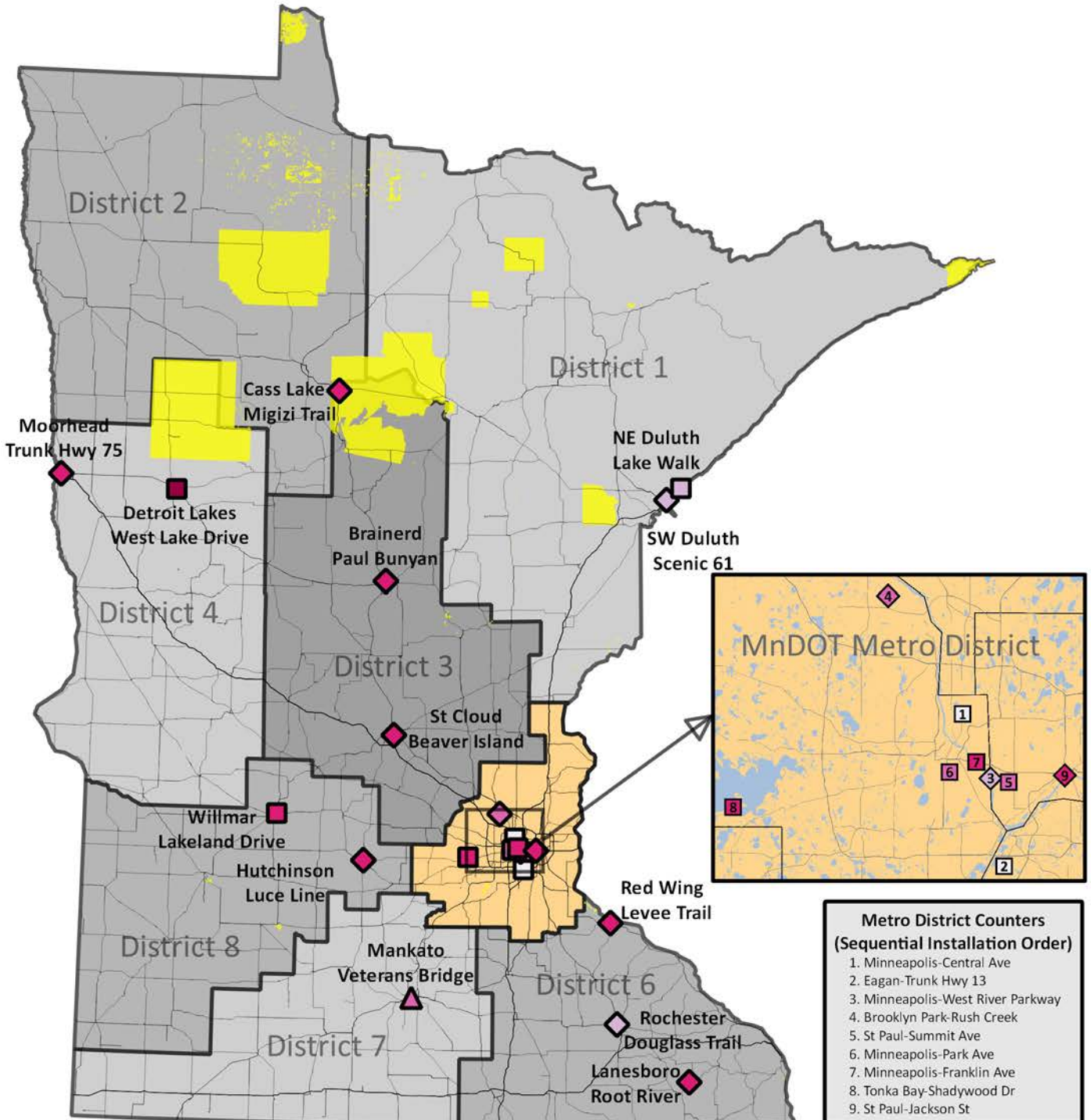
Urbanized Area Funding Program (pop 50,000+), includes ADA Paratransit Services Rural County Systems Rural Community Systems

DOT Office of Transit and Active Transportation
Connecting MN, one ride, stride, and pedal at a time

Permanent Reference People Counters

29 Counters at 22 Sites

13 Sites on Trails and 9 Sites on Roads



- Metro District Counters (Sequential Installation Order)**
1. Minneapolis-Central Ave
 2. Eagan-Trunk Hwy 13
 3. Minneapolis-West River Parkway
 4. Brooklyn Park-Rush Creek
 5. St Paul-Summit Ave
 6. Minneapolis-Park Ave
 7. Minneapolis-Franklin Ave
 8. Tonka Bay-Shadywood Dr
 9. St Paul-Jackson St

Installation Year

- 2013
- 2014
- 2015
- 2016
- 2017




Data Collected

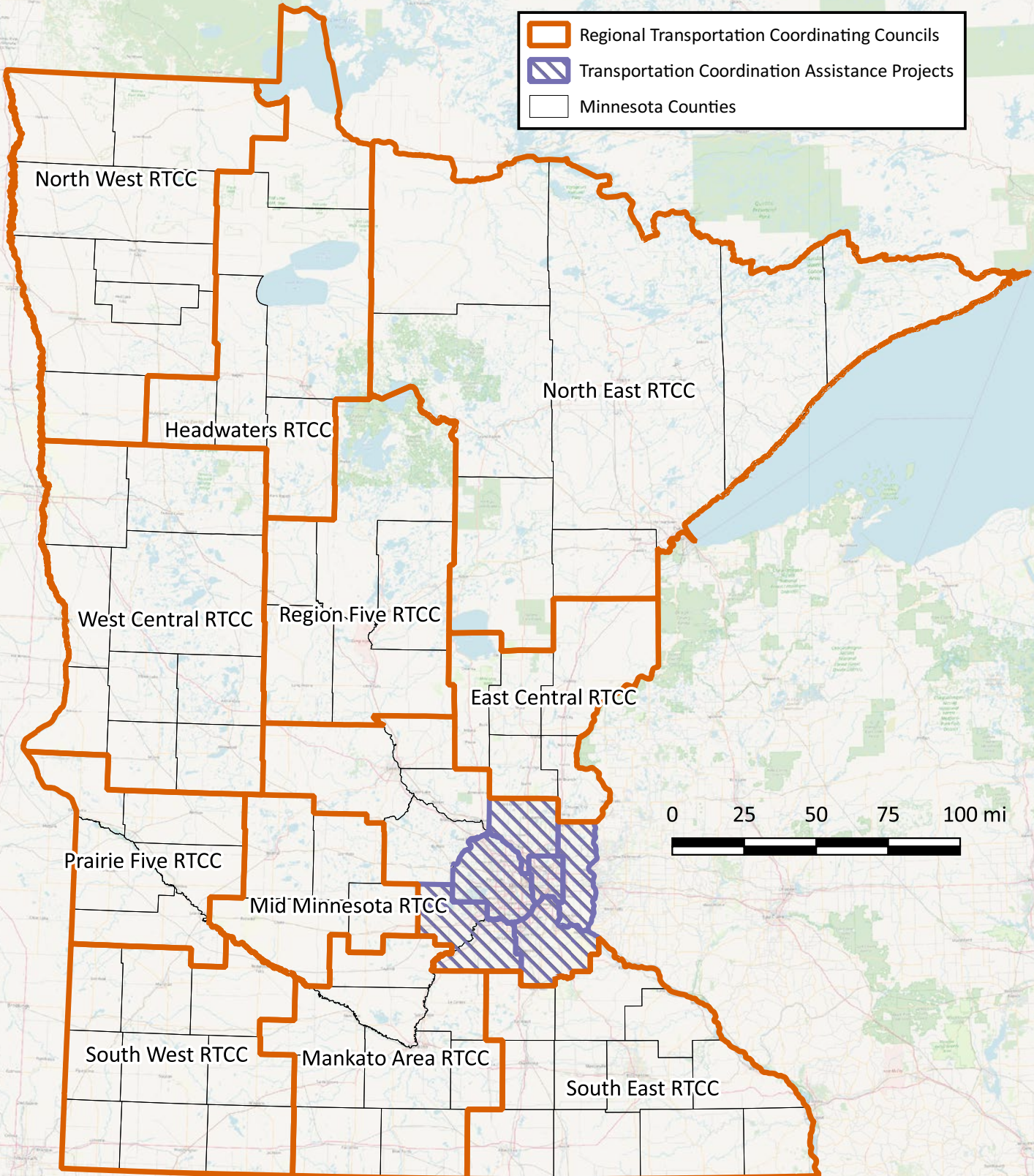
- Bikes Only
- ◇ Pedestrians + Bikes
- △ Unsorted Active Transportation




Tribal Lands

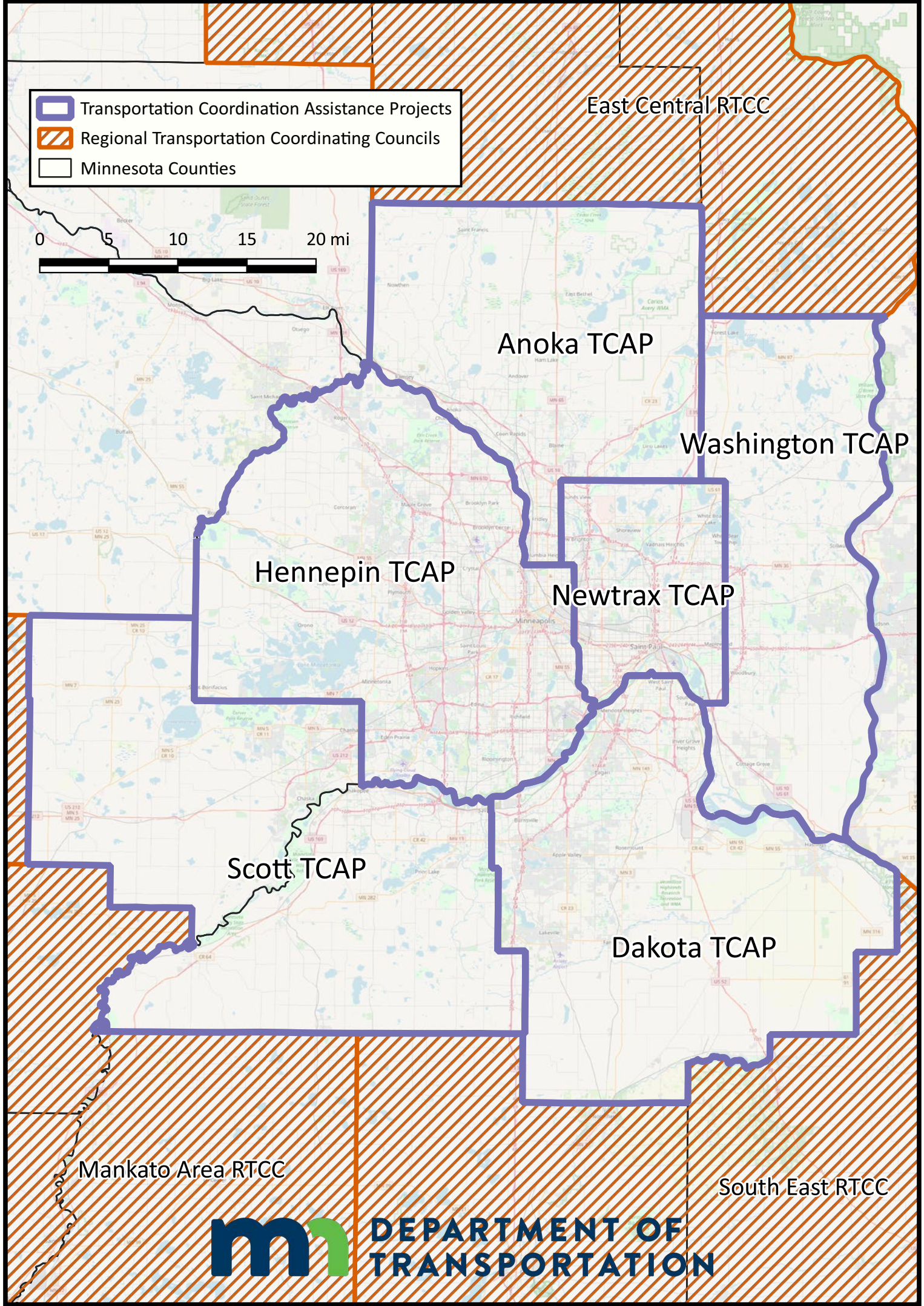


Regional Transportation Coordinating Councils & Transportation Assistance Coordination Projects

-  Regional Transportation Coordinating Councils
-  Transportation Coordination Assistance Projects
-  Minnesota Counties



-  Transportation Coordination Assistance Projects
-  Regional Transportation Coordinating Councils
-  Minnesota Counties



East Central RTCC

Anoka TCAP

Washington TCAP

Hennepin TCAP

Newtrax TCAP

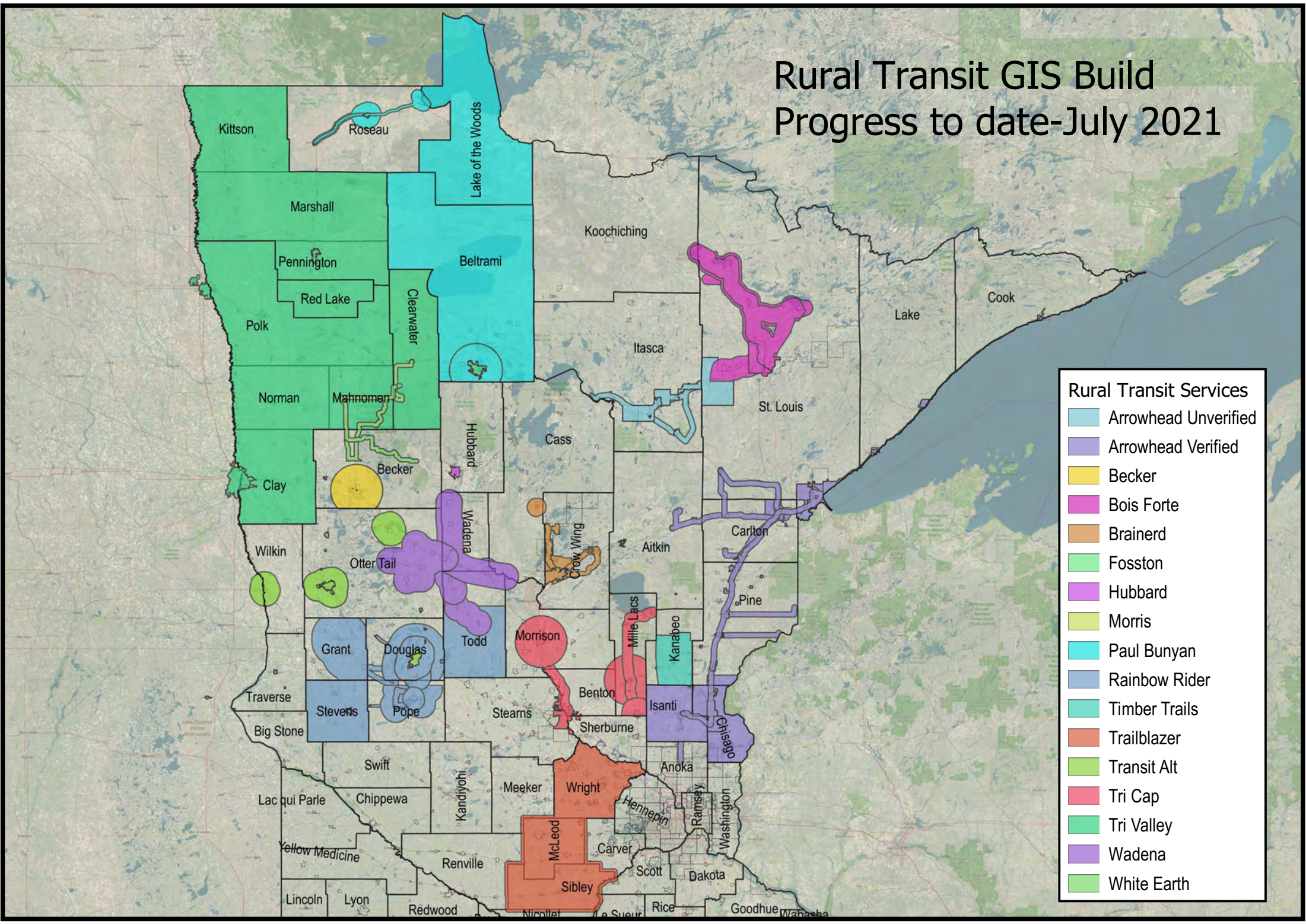
Scott TCAP

Dakota TCAP

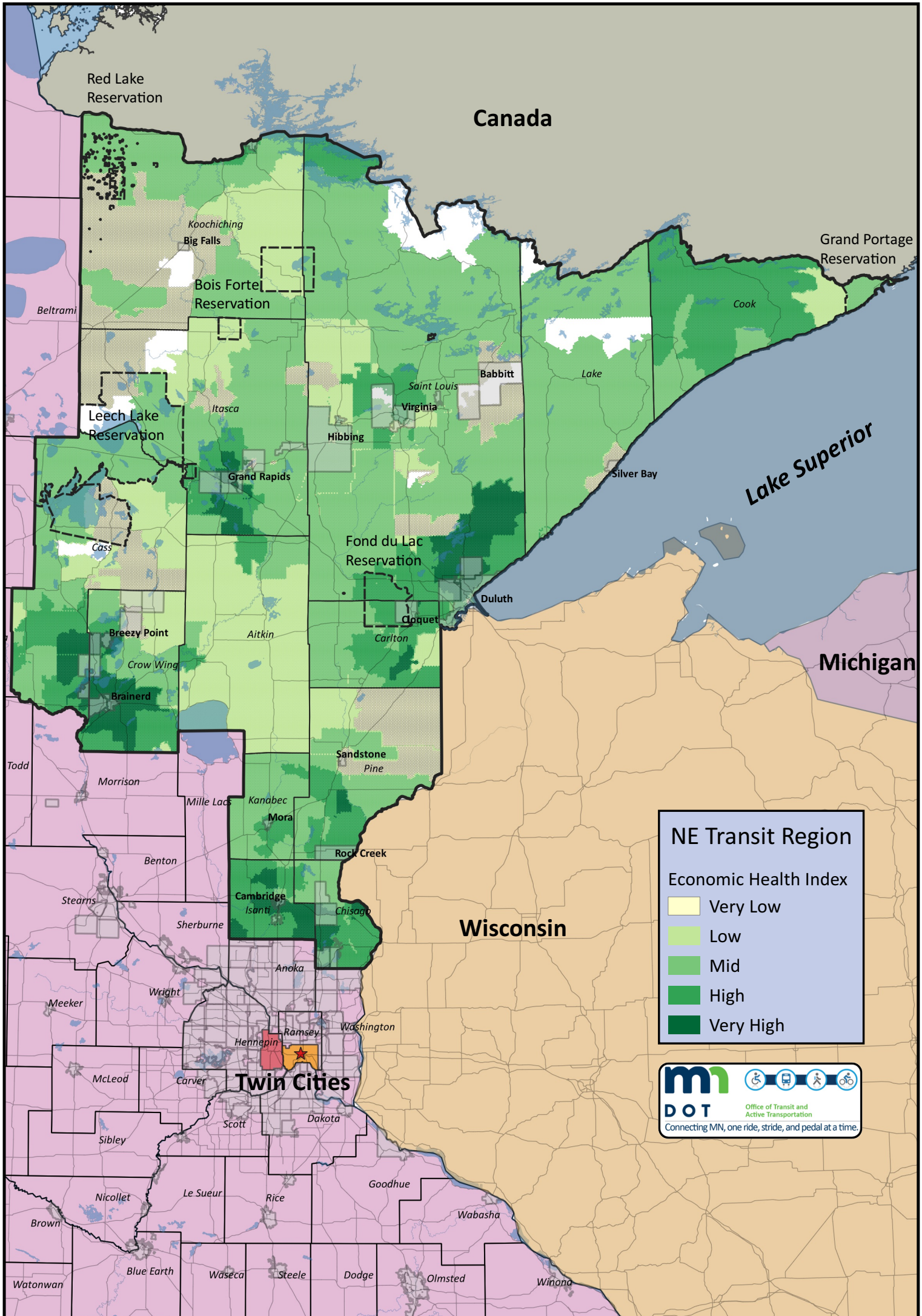
Mankato Area RTCC

South East RTCC

Rural Transit GIS Build Progress to date-July 2021



- Rural Transit Services**
- Arrowhead Unverified
 - Arrowhead Verified
 - Becker
 - Bois Forte
 - Brainerd
 - Fosston
 - Hubbard
 - Morris
 - Paul Bunyan
 - Rainbow Rider
 - Timber Trails
 - Trailblazer
 - Transit Alt
 - Tri Cap
 - Tri Valley
 - Wadena
 - White Earth



Red Lake Reservation

Canada

Grand Portage Reservation

Bois Forte Reservation

Koochiching
Big Falls

Beltrami

Leech Lake Reservation

Grand Rapids

Saint Louis
Virginia

Babbitt

Lake

Lake Superior

Silver Bay

Hibbing

Fond du Lac Reservation

Duluth

Michigan

Breezy Point
Crow Wing

Aitkin

Carlton

Brainerd

Sandstone
Pine

Todd

Morrison

Mille Lacs

Kanabec

Mora

Rock Creek

Wisconsin

NE Transit Region

Economic Health Index

Very Low

Low

Mid

High

Very High



Twin Cities

Hennepin

Ramsey

Washington

McLeod

Carver

Scott

Dakota

Sibley

Le Sueur

Rice

Goodhue

Wabasha

Nicollet

Blue Earth

Waseca

Steele

Dodge

Olmsted

Winona

Watsonwan

Blue Earth

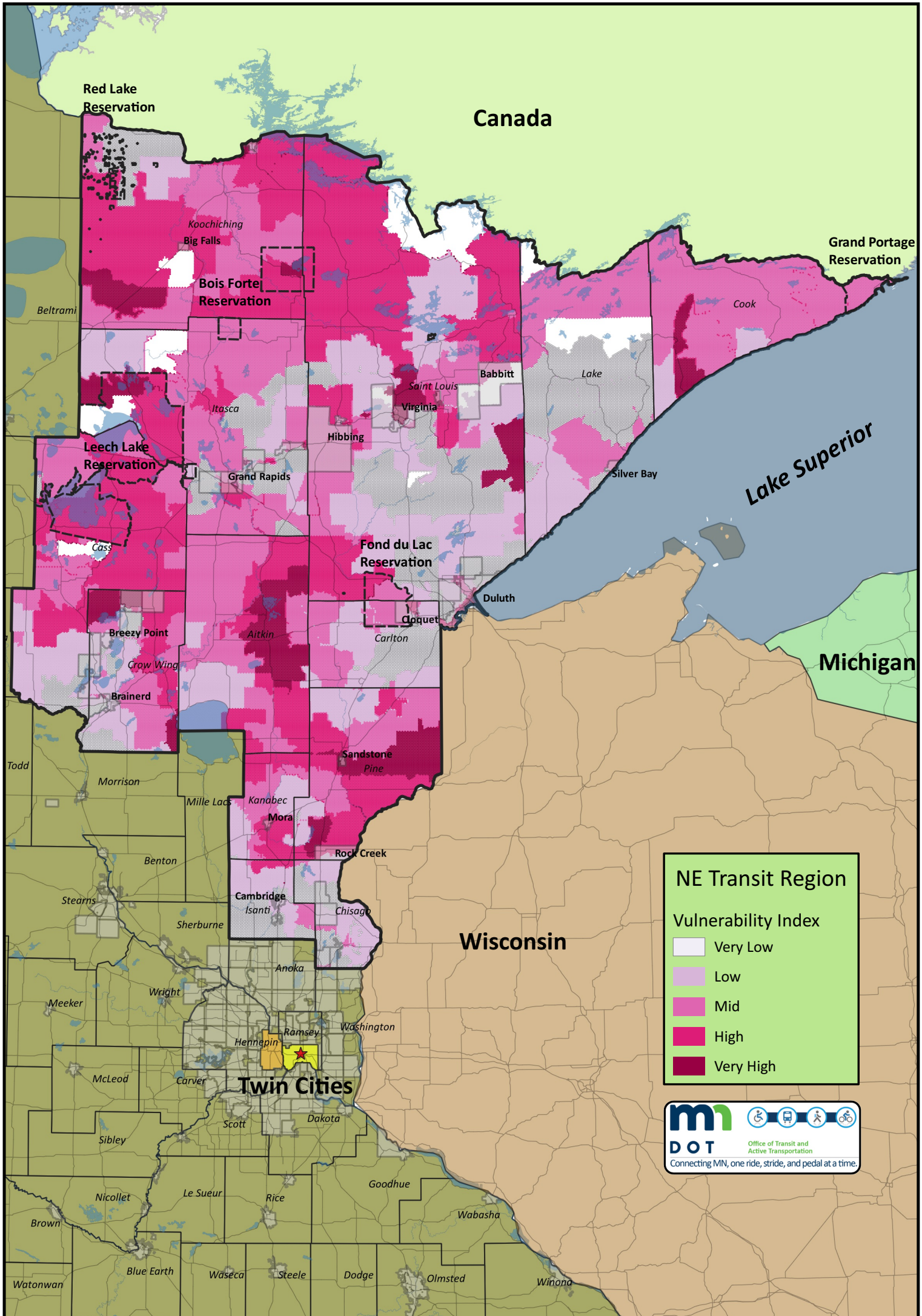
Waseca

Steele

Dodge

Olmsted

Winona



Red Lake Reservation

Canada

Grand Portage Reservation

Bois Forte Reservation

Koochiching
Big Falls

Beltrami

Cook

Saint Louis
Virginia

Babbitt

Lake

Lake Superior

Leech Lake Reservation

Hibbing

Silver Bay

Grand Rapids

Fond du Lac Reservation

Duluth

Michigan

Breezy Point

Aitkin

Carlton

Cloquet

Crow Wing

Brainerd

Sandstone
Pine

Todd

Morrison

Mille Lacs

Kanabec
Mora

Rock Creek

Wisconsin

Cambridge
Isanti

Chisago

NE Transit Region

Vulnerability Index

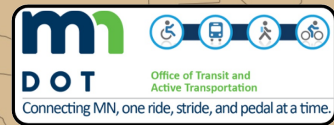
Very Low

Low

Mid

High

Very High



Twin Cities

Hennepin Ramsey

Washington

McLeod

Carver

Scott

Dakota

Nicollet

Le Sueur

Rice

Goodhue

Wabasha

Brown

Blue Earth

Waseca

Steele

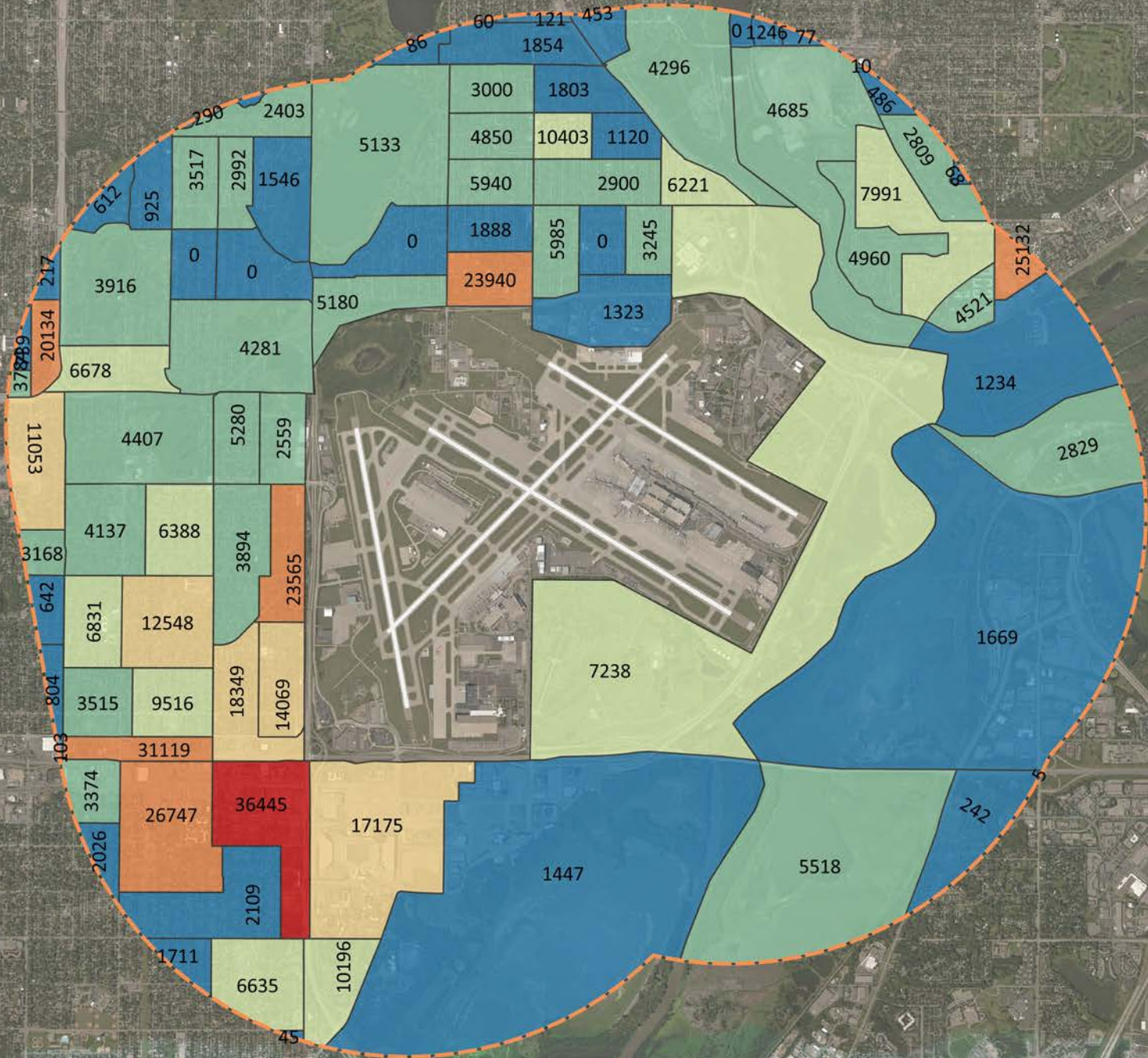
Dodge

Olmsted

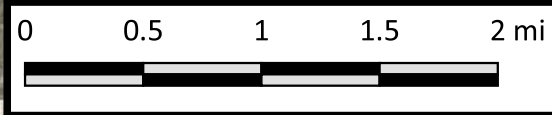
Winona

Watsonwan

Minneapolis-St Paul International Airport Composite SoVI: 482,312

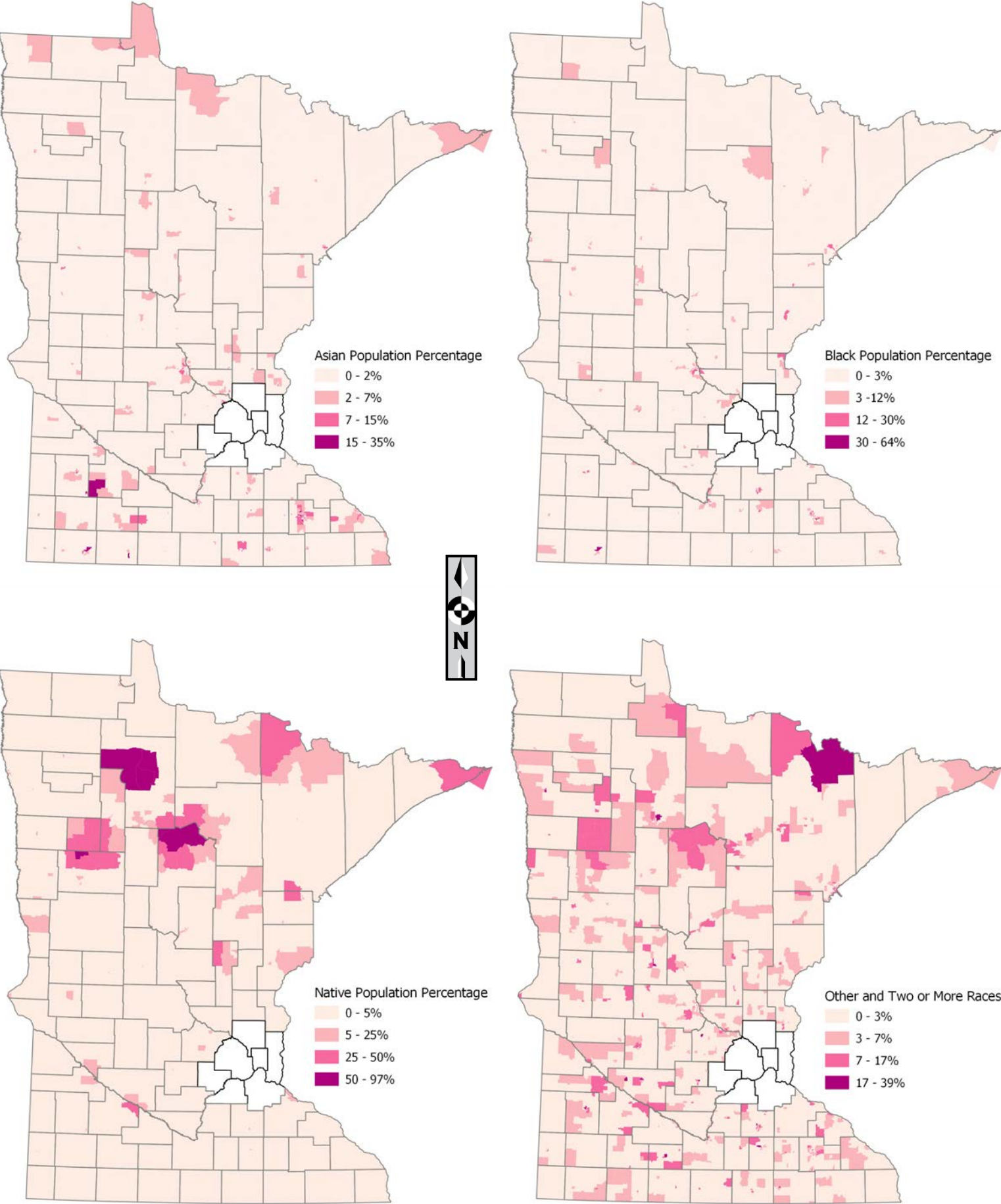


	Minnesota	MSP
Population	5,490,730	66,212
Poverty	6.58%	6.32%
No Vehicle Access	6.95%	8.31%
Non-White	16.25%	28.19%
Black	5.96%	12.43%
Native	1.05%	1.03%
Asian	4.66%	4.12%
Hispanic	5.18%	12.23%
Limited English	2.41%	4.49%
No Diploma	7.22%	8.18%
< 5 Years Old	6.37%	8.06%
> 64 Years Old	14.64%	11.67%
Disabled	21.77%	20.70%
Single Parent	28.06%	29.30%
Per Cap Income	\$34,712	\$35,008
Pop Density	63	4,284



Statewide: Racial Subcategory Populations in Greater Minnesota

Figure 2: Racial Subcategory Populations in Greater Minnesota (does not include 7 county Twin Cities Metro)



Source: 2018 American Community Survey 5-Year Estimates at Census Block Group Level